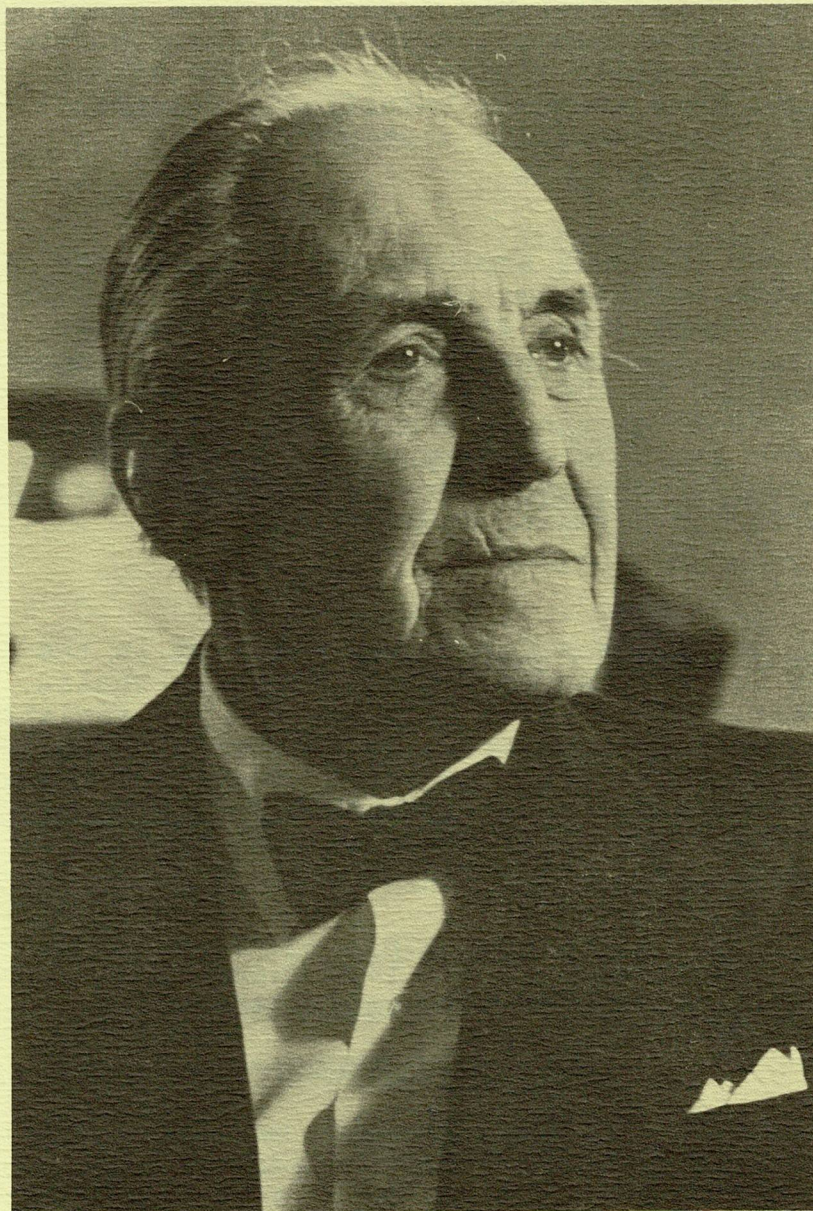


# THALIA SYMPHONY CONCERT



DR. STANLEY CHAPPLE, *Conductor*

Sunday 18 December 1977 at 8:00 pm

**MEANY HALL**

University of Washington  
Seattle, Washington

THALIA SYMPHONY, under the baton of Dr. Stanley Chapple, continues to rise to his exacting and inspiring leadership, giving vital and convincing performances of symphonic masterpieces. Through the Northwest Composers Symposium and the Puget Sound Concerto Auditions, the Symphony spotlights composers and soloists from our large Northwest Community. Originally founded by the late Mikael Scheremetiew, this Symphony unfailingly presents a varied menu for the discriminating listener.

THALIA CHAMBER SYMPHONY explores the infrequently heard Small Ensemble and Chamber Symphony literature with the leading instrumentalists from the Thalia Symphony. Founded and directed by Frances Walton, this portable ensemble performs monthly in the King County Libraries on a KCAC grant, and offers quarterly concerts in the greater Seattle area. In May the Chamber Symphony will premier Dr. Greg Steinke's Duo Concertante for the Evergreen College Concert Series in Olympia, Washington.

RANDY PLUT, tonight's soloist, was a winner in the 1976 Puget Sound Concerto Auditions sponsored by Thalia. Randy is a composer, as well as a pianist, and has finished a piece for symphony orchestra. He is currently polishing his First String Quartet. He was a student of the late Lochrem Johnson, and won first place in the Washington State Music Teachers Association contest in 1975 at the college level.

For further information on the 1978 Puget Sound Concerto Auditions, please call Jean Cushman, 746-1963.

--ACKNOWLEDGEMENTS--

Thalia Symphony and Chamber Symphony meet each week at the Shoreline Community College for Thursday evening rehearsals, from 7:30 - 10:00 p.m. The College, as a part of its fine community affairs program, provides facilities and substantial support, for which the orchestra members and conductors are very grateful.

Thalia is a tax-exempt, non-profit, educational institution supported by Patrons, Donors, Contributors and Friends. The Corporation and its Library embrace six community symphonies open to qualified instrumentalists of varied abilities and ages. Donations to the THALIA SYMPHONY and CHAMBER SYMPHONY Scholarship Fund are tax-deductible and are greatly appreciated. Collection bowls are located at the exits.

PROGRAM

B E E T H O V E N

EIGHTH SYMPHONY

Allegro vivace e con brio

Allegretto scherzando

Tempo di Menuetto

Allegro vivace

B E E T H O V E N

FIFTH PIANO CONCERTO ("EMPEROR")

Allegro

Adagio un poco mosso

Rondo - Allegro

Randolph Plut, Soloist

December 1977 marks the month of Beethoven's 150th birthday!  
What better way to celebrate? Dr. Stanley Chapple has the  
answer as he leads the audience and the orchestra through an  
enjoyable lecture demonstration. Relax, sit back and enjoy  
.....learning has never been so much fun!

NEXT CONCERT

BRITTEN

VAUGHAN WILLIAMS

STRAVINSKY

MENDELSSOHN

Sinfonietta

Dives and Lazarus for Strings

Firebird Suite, Berceuse and Finale

"Reformation" Symphony

# THALIA SYMPHONY

## Violins I

Barbara Boltin, Concertmistress  
Ann Dwyer, Assistant Concert-  
mistress  
Mary Jane Brockman  
Ruth Jones  
Jo Foster  
Paula Ferguson  
Susan Zisman  
Phyllis Rowe  
Maxine Fuller  
Solveig Lee  
Janet Greene  
Ellen Lund

## Violins II

Phil Ellis<sup>1</sup>, Principal  
Rob Emery, Assoc. Principal  
Lillian Claunch  
Jim Lynch  
Jim Dawson  
Cheryl Dawson  
Beth Frisbey  
Jill Peterson  
Linda Hodges

## Violas

Carol Landon, Principal  
Diane Stone, Assoc. Principal  
Alice Leighton  
Kathy Dawson  
Keith Ferguson

## Violoncellos

Frances Walton, Principal  
Barbara Greget, Assoc. Principal  
Lynne Werner  
John Fiore  
Brian Hamilton  
Nils Thoresen  
Norma Burke  
Maja Engstrom

## Contrabasses

Arthur Nation, Principal  
Christine Zuck, Assoc. Principal  
Dan Scribner  
Ann Cox  
Eva Baudin

## Flutes

Carolyn Stinson  
Karen Gozinsky-Lenke

## Oboes

Charles Bradley  
Leslie Bain  
June Ellis

## Clarinets

Frank Sincock  
Sheldon Woodle  
Brenda Sullivan

## Bassoons

Michel Jolivet  
Dan Kerlee

## French Horns

David Harris  
Everett Gutschmidt  
Mike Clayton  
Joe Catterson

## Trumpets

Lucien Jones  
James Wagner

## Timpani

Roland Ferguson

---

Orchestra personnel are seated according to a modified rotation system. Interested instrumentalists, with a solid background of symphony orchestra experience plus private study, may call June Ellis, Thalia Symphony Manager, 486-1442, for information.